

Content

- 1x Beer Draft Price Board display
- 4 x Command strip tape

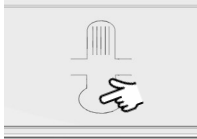
Note! This display has “dome buttons” in addition to the control buttons for quick access to settings. The dome buttons are located on the rear side of the display in the lower right corner.



SCAN QR-CODE FOR HOW-TO-SET PRICING & NIGHT SLEEP VIDEO

<https://www.motiondisplay.com/ABI-Draft-Beer-Price-Board>

Display Control Buttons



Animation On/Off
⌂ ≥2 seconds



Enter/Exit Setting Mode*
⌂ ≥2 seconds



Set Values (Setting Mode)
⌂ Change position
⌂ Change value **

Note!

Short press on both buttons simultaneously for **Night Sleep Setting**.

For quick access to setting mode and settings, use:
Upper dome instead of ⌂
Lower dome instead of ⌂

Setting Mode Overview

	Value Range	
①	PINT	or PITCHER
②	1	or blank
③	0-9	or blank
④	.	or blank
⑤	0-9	or blank
⑥	0-9	or blank

Setting Mode is indicated by a black background. Currently selected position is flashing.

Note: If value is set to blank (don't show), a short flash indicates current position

* 20s idle will exit Setting Mode

** Changed values take effect immediately

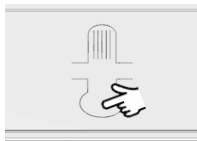
Night Sleep Activation

The battery life length can be extended by activating the Night Sleep mode, and the display will sleep for 8 hours per day. During Night Sleep, the animation stops and shows the current PINT price together with a small moon symbol.



Note!

Short press on both buttons simultaneously moves into **Night Sleep Setting** with OFF blinking, indicating that Night Sleep (NS) is not activated.



Ω activates NS with proposed 12 hour left until display Goes into NS. View shows “h 12”.

While “h xx” is blinking, Ω toggles between “OFF” and “h xx, i.e turns NS On/Off.

If NS is turned “OFF”, last setting of “h xx” will be kept.



⏏ moves to digits and Ω changes value. Note, the value range is 1-15.

Holding down Ω counts up continuously.

Holding down ⏏ for a long time exits NS setting—or just wait for “time-out”.

Night Sleep Hour “Check” and/or “Change”.

Note! During NS, the Dome Buttons on the display are turned off.

Move into NS Setting with a short press on both buttons simultaneously.

Display now tells how many hours left until NS. Example: If initial setting was “h 12” and two hours have past, the display will now show “h 10”).

By selecting digits with ⏏ and changing value with Ω, the new selection will be activated.

Holding down ⏏ for a long time exits NS setting—or just wait for “time-out”.

Note! If Display is in NS mode, Ω activates the display for one animation sequence, enough time to activate NS setting and chose a new time or turn “OFF” NS.

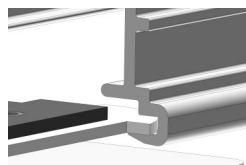
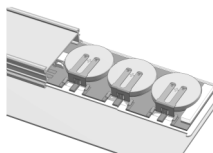
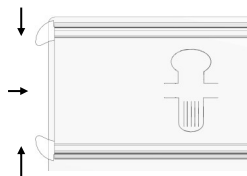
Replacing the Batteries

When it is time to replace the batteries, a battery symbol is shown and the display stops animating, showing the current PINT price, the so called End of Life view.



Squeeze the “snap locks” and slide the extrusion off the display to expose the batteries. Remove and replace the batteries, the “+” sign facing up. Slide the display back according to image until locked in position.

Do not mix old batteries with new ones. Only use CR2450 batteries!



LEGAL DISCLAIMER:

MOTION DISPLAY SCANDINAVIA AB AND ALL ITS AFFILIATES DISCLAIM ANY AND ALL RESPONSIBILITY FOR USE OF MOTION DISPLAY PRODUCTS FOR OTHER PURPOSES THAN ITS INTENDED USE AS DESCRIBED IN THIS USER INSTRUCTION. INSTALLATION AND REMOVAL MAY ONLY BE PERFORMED BY AUTHORIZED PERSONNEL, AND SHALL BE MADE ONLY IN ACCORDANCE WITH THIS INSTRUCTION. MOTION DISPLAY DISCLAIM ALL RESPONSIBILITY FOR ANY INJURIES CAUSED BY WRONGFUL HANDLING OF THE PRODUCT, INCLUDING FROM ANY MATERIAL LEFT ON SHELVES AFTER REMOVAL.

SECURING THE BOARD TO THE WALL

PLEASE NOTE: Installer of the board is responsible for attaching the board properly. Motion display will not be liable for any loss or damage arising from this product, whether direct, indirect, special incidental or consequential, during or after installation.

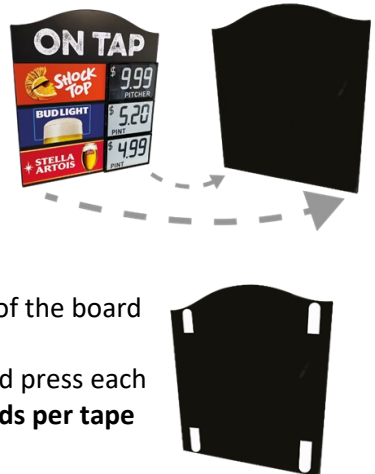
MOUNTING OPTIONS:

1. The most secure fastening will be made with 4 screws into the wall.
If the locale allows, use a power screwdriver and secure with wall screws in 4 corners of the board. (Screws are not provided).
2. If surface is smooth, clean, and dry, the provided command strips can be used.

MOUNTING THE BOARD WITH PROVIDED COMMAND STRIPS

If surface is smooth, clean, and dry, the provided command strips can be used.

1. Flip display to the back side
2. Clean surface with isopropyl rubbing alcohol, wipe gently, let dry. Do not use household cleaners.
3. Remove red liners and place 4 command strips vertically on the back of board. Make sure the tape is placed with identified text "wall side" visible.
4. Make sure the "pull-tabs" are facing the edge of the board for future removal.
5. Remove black liners. Position board on wall and press each area with command strips to wall **for 30 seconds per tape strip**, to ensure secure attachment to wall.



HOW TO REMOVE A BOARD MOUNTED WITH PROVIDED COMMAND STRIPS

Note! NEVER pull strip towards you.

1. Gently lift lower left corner of the board to reveal tab.
2. Lightly press top of strip and grab tab, **stretch slowly straight down along wall.** Continue stretching at least 6 inches until strip releases from wall.
3. Repeat step 1-2 with lower right corner.
4. Gently lift upper left corner of the board to reveal tab.
5. Lightly press bottom of strip and grab tab, stretch **slowly up along wall.** Continue stretching at least 6 inches until strip releases from wall.
6. Repeat step 4-5 with upper right corner.



BE CAREFUL AND HOLD THE BOARD WHEN RELEASING STRIPS FROM WALL!

LEGAL DISCLAIMER:

MOTION DISPLAY SCANDINAVIA AB AND ALL ITS AFFILIATES DISCLAIM ANY AND ALL RESPONSIBILITY FOR USE OF MOTION DISPLAY PRODUCTS FOR OTHER PURPOSES THAN ITS INTENDED USE AS DESCRIBED IN THIS USER INSTRUCTION. INSTALLATION AND REMOVAL MAY ONLY BE PERFORMED BY AUTHORIZED PERSONNEL, AND SHALL BE MADE ONLY IN ACCORDANCE WITH THIS INSTRUCTION. MOTION DISPLAY DISCLAIMS ALL RESPONSIBILITY FOR ANY INJURIES CAUSED BY WRONGFUL HANDLING OF THE PRODUCT, INCLUDING FROM ANY MATERIAL LEFT ON SHELVES AFTER REMOVAL.